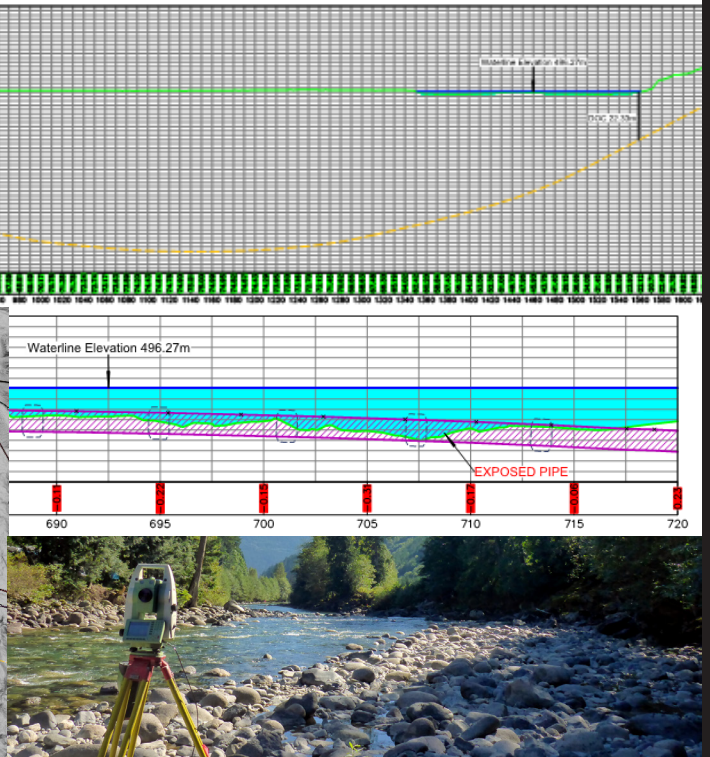
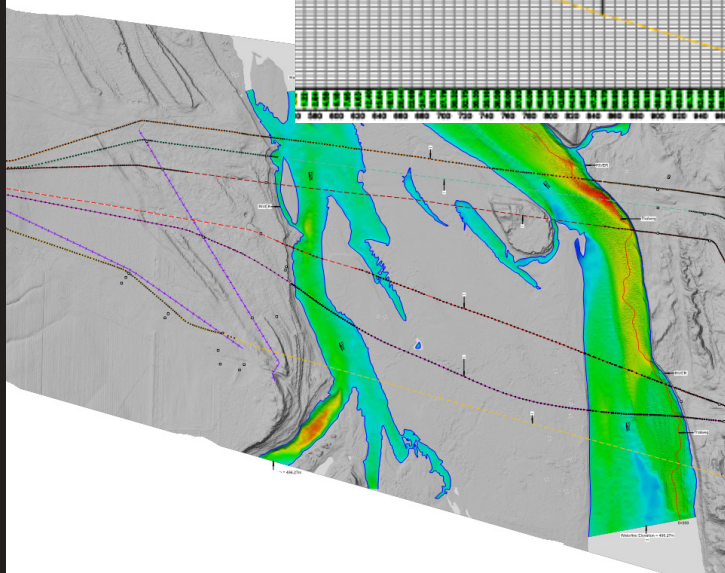




**MEASUREMENT  
SCIENCES INC**



# PIPELINE INTEGRITY

## DEPTH OF COVER SURVEYS

Combining accurate pipe locating and dense topographic surveys to produce a precise representation of the asset and surrounding environment.



### Decade of surveys

MSI has been completing DOC surveys for over a decade. Surveying over 1000 different hazards.



### Combination of Services

Combining LiDAR and bathymetric data allows MSI to create a full 3D model of the hazard and infrastructure.



### Accurate Locates

MSI continues to improve pipe location equipment and techniques.

## Leading the Industry

Please visit our webpage for more information or contact MSI to discuss your project.

6921 48st S.E Calgary AB info@msciences.ca www.msciences.ca (403) 283-3773